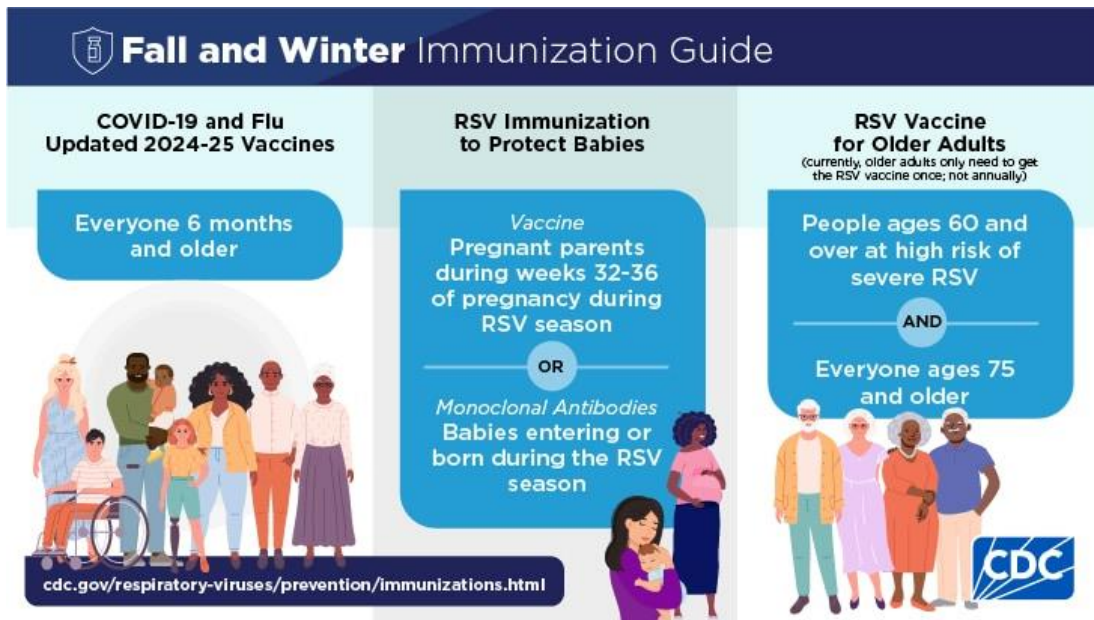


What are the current vaccination recommendations this cold and flu season?

Immunizations, like vaccines, are a [core prevention strategy](#) to lower the risk of respiratory viruses this cold and flu season. Getting a vaccine allows the body to learn how to protect itself against a virus- preventing severe illness and death if infected.

2024/2025 Seasonal Respiratory Virus Vaccine Recommendations



- [Flu](#)
 - Everyone 6 months of age and older, with rare exception, are recommended for the annual flu vaccination.
- [COVID-19](#)
 - Everyone 6 months and older, are recommended for the updated 2024-2025 COVID-19 vaccination.
 - This includes people who have never been vaccinated, who have been vaccinated in the past, and those who've previously had COVID-19.
- [RSV-](#)
 - [Adults:](#)
 - All adults ages 75 years and older
 - Adults ages 60–74 years who are at increased risk of severe RSV.
 - Pregnant people
 - 1 dose of maternal RSV vaccine during weeks 32 through 36 of pregnancy, administered September through January.
 - Pfizer Abrysvo is the only RSV vaccine recommended during pregnancy.

****RSV is not an annual vaccine. If you have already received an RSV vaccine, you do not have to get another dose at this time.****

- [Infants and Children:](#)
 - There are no vaccines for infants and children. To learn more about monoclonal antibodies and other immunizations for RSV click [here](#).

Getting a flu vaccine and a COVID-19 vaccine at the [same time](#) is recommended if you are eligible and the timing for each vaccine is right. It is also safe. (You can also get your RSV vaccine at the same time as your flu and COVID vaccine).

Curious about what other vaccinations you may need? Check out the recommended Vaccination Schedules Below:

[Newborns to Children \(0-6 years\)](#) Vaccination Schedule

[Children/Teens \(7-18 years\)](#) Vaccination Schedule

[Adults \(19 and older\)](#) Vaccination Schedule

Source: <https://www.cdc.gov/respiratory-viruses/prevention/immunizations.html>